

ABW EG 0.1
NF: 42.7 m²

WHG EG 0.2
NF = 24.0 m²

WHG EG 0.3
NF = 23.2 m²

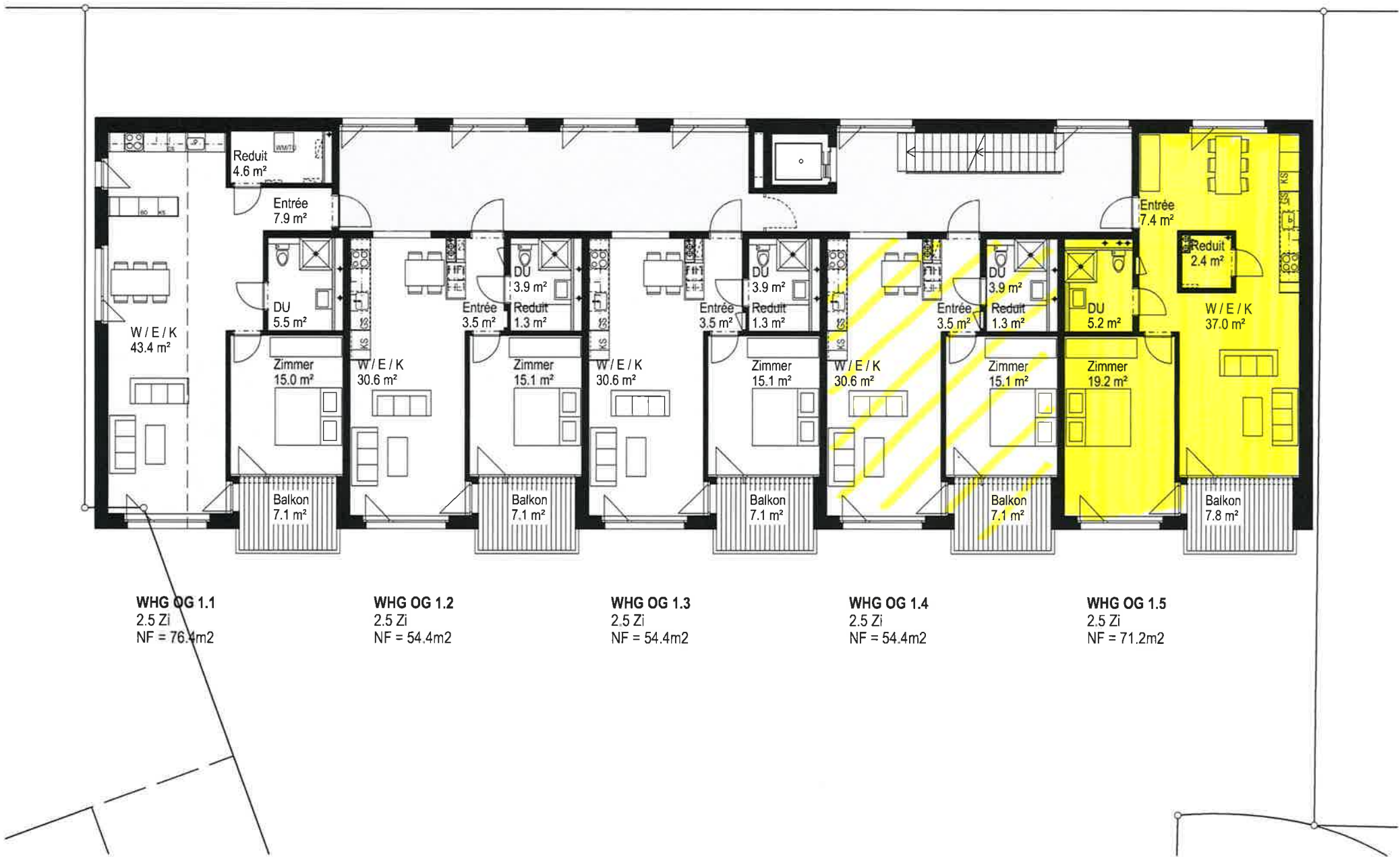
WHG EG 0.4
NF = 24.0 m²

WHG EG 0.5
NF: 23.2 m²

ABW EG 0.6
NF = 32.7 m²



Erdgeschoss Haus D 1:150



WHG OG 1.1
 2.5 Zi
 NF = 76.4m²

WHG OG 1.2
 2.5 Zi
 NF = 54.4m²

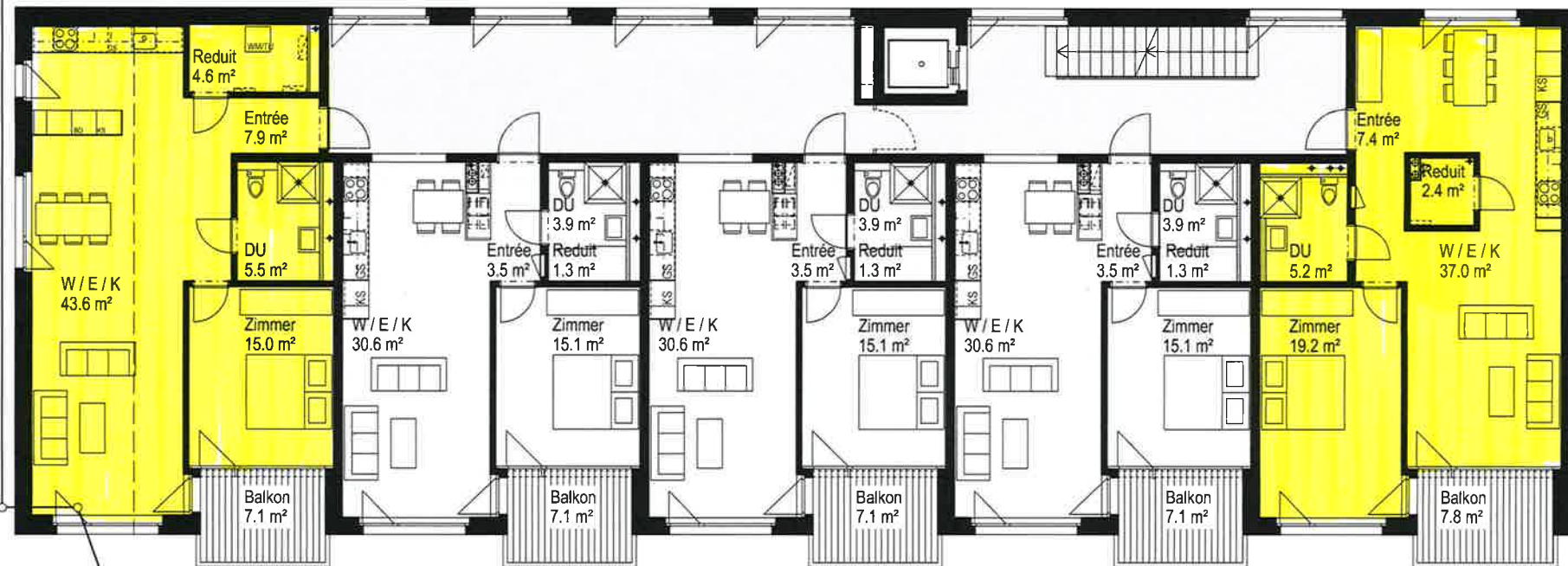
WHG OG 1.3
 2.5 Zi
 NF = 54.4m²

WHG OG 1.4
 2.5 Zi
 NF = 54.4m²

WHG OG 1.5
 2.5 Zi
 NF = 71.2m²



1. Obergeschoss Haus D 1:150



WHG OG 2.1
2.5 Zi
NF = 76.6m²

WHG OG 2.2
2.5 Zi
NF = 54.3m²

WHG OG 2.3
2.5 Zi
NF = 54.3m²

WHG OG 2.4
2.5 Zi
NF = 54.3m²

WHG OG 2.5
2.5 Zi
NF = 71.4m²

0 1 2 5

2.Obergeschoss Haus D 1:150